



Front loading
washer
extractors

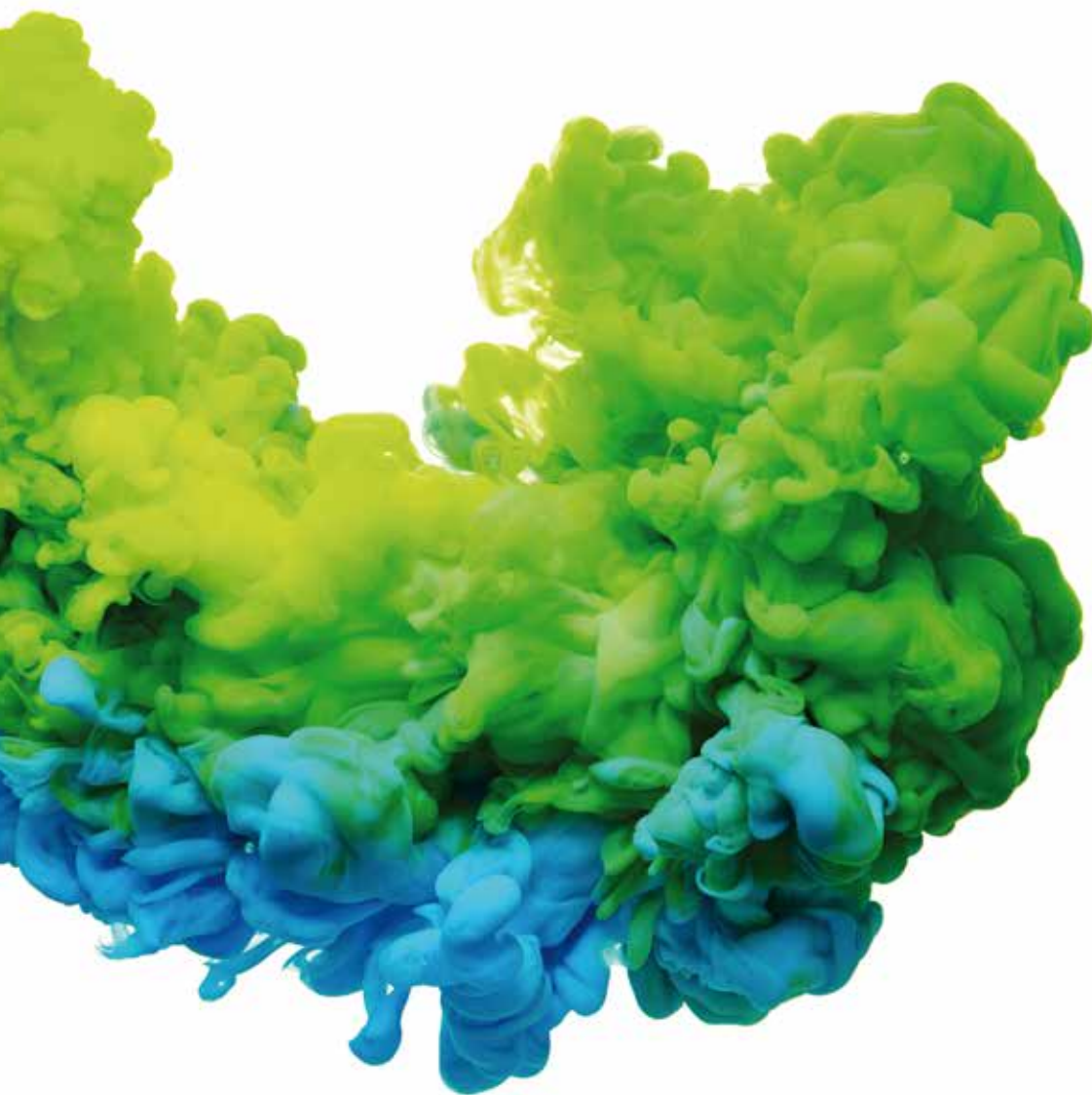


ECOVOLUTION
by DOMUS

Front washers

The new high, medium and low spin front washers offer an advanced design and technology, combined with a huge variety of accessories and options.

They are focused on satisfying the laundry needs of many sectors, always taking into consideration efficiency and productivity as main goals.



ECOVOLUTION

by DOMUS



HIGH SPIN WASHERS | G FACTOR 450

CONTROL TYPE	HEATING	CAPACITY							
		10-11 kg	13-14 kg	18-20 kg	25-28 kg	35-38 kg	45-50 kg	60-65 kg	120-133 kg
TOUCH II Programmable Control	Electric, hot water and steam	DHS-11 TOUCH II	DHS-14 TOUCH II	DHS-18 TOUCH II	DHS-27 TOUCH II	DHS-36 TOUCH II	DHS-45 TOUCH II	DHS-60 TOUCH II	DHS-120 TOUCH II
TOUCH II COIN Coin laundry	Electric and hot water	DHS-11 TOUCH II	DHS-14 TOUCH II	DHS-18 TOUCH II	DHS-27 TOUCH II	DHS-36 TOUCH II	-	-	-



MEDIUM SPIN WASHERS | G FACTOR 300

CONTROL TYPE	HEATING	CAPACITY			
		10-11 kg	13-14 kg	18-20 kg	25-28 kg
TOUCH II Programmable Control	Electric, hot water and steam	DMS-11 TOUCH II	DMS-14 TOUCH II	DMS-18 TOUCH II	DMS-27 TOUCH II
TOUCH II COIN Coin laundry	Electric and hot water	DMS-11 TOUCH II	DMS-14 TOUCH II	DMS-18 TOUCH II	DMS-27 TOUCH II



LOW SPIN WASHERS | G FACTOR 200

CONTROL TYPE	HEATING	CAPACITY					
		10-11 kg	13-14 kg	18-20 kg	25-28 kg	35-38 kg	60-66 kg
TOUCH II Programmable Control	Electric, hot water and steam	DLS-11 TOUCH II	DLS-14 TOUCH II	DLS-18 TOUCH II	DLS-27 TOUCH II	DLS-36 TOUCH II	DLS-60 TOUCH II
TOUCH II COIN Coin laundry	Electric and hot water	DLS-11 TOUCH II	DLS-14 TOUCH II	DLS-18 TOUCH II	DLS-27 TOUCH II	DLS-36 TOUCH II	DLS-60 TOUCH II

HIGH SPIN



DHS G FACTOR 450/350

HIGH SPIN RANGE

- ✓ Soft mounted washers, free standing
- ✓ Panels in skinplate
- ✓ R.P.M. between 678 - 1.231
- ✓ Easy to install, no needs of fixation to the floor, no extra costs
- ✓ Savings due to high extraction of water (40-45% residual humidity)

MEDIUM SPIN



DMS G FACTOR 300

MEDIUM SPIN RANGE

- ✓ Hard mounted washers
- ✓ Anchoring to floor with anchoring base
- ✓ Panels in skinplate
- ✓ R.P.M. between 836 - 929
- ✓ Savings due to high extraction of water (55-65% residual humidity)

LOW SPIN



DLS G FACTOR 200/150

LOW SPIN RANGE

- ✓ Hard mounted washers
- ✓ Anchoring to floor with anchoring base
- ✓ Panels in skinplate
- ✓ R.P.M. between 505-759
- ✓ Savings due to high extraction of water (60-70% residual humidity)

ECOENERGY



TOUCH II

- ✓ User friendly and totally programmable microprocessor with **7" touch screen** and 29 preset programs.
- ✓ **USB Connection.** PC software free of charge for programming, traceability, data analysis...
- ✓ **Videos on display: ads, instructions** (useful for coin laundry)
- ✓ **37 languages**
- ✓ **8 dosing signals as standard + optional 6 extra dosing signals**



G FACTOR

- ✓ **High G-FACTOR for all range of washers comparing with competitors**
G-FACTOR 450 for High spin washers
G-FACTOR 300 for Medium spin washers
G-FACTOR 200 for Low spin washers
- ✓ **High G-Factor reduces residual moisture and drying time**



VERSATILITY

- ✓ **Make to order: customisation**
New possibility to customise the machines from factory with the available options
- ✓ **OPL < > Coin / Token**
Standard models easily transformable with coin/token kits
- ✓ **Electric < > Hot water**
Standard electric models easily transformable to hot water models
- ✓ **Drain valve < > Pump**
Standard models easily transformable
Easy access and service
- ✓ **Wet cleaning**
All washers have all features to use wet cleaning programs



CONNECTIVITY

- ✓ **Remote technical service**
Machine monitoring, machine error warning, management for traceability and statistics. Remote desk and data recovery for technicians and maintenance, software update, etc.
- ✓ **Management for laundries: OPL and COIN**
Our DOMUS IoT solution allows you to manage your laundry business (i.e. create discount programs for customers, get statistics, traceability and laundry monitoring).
- ✓ **Remote payment:** App for payments, cashless payment by scanning a QR code, promotions and machine booking



EFFICIENCY

- ✓ **Intelligent Weighing System**
Possibility of configuring three levels of savings
- ✓ **Optimal loading**
- ✓ **Prepared to be connected to water recovery tanks ECOTANK**
- ✓ **Low water consumption**
Standard washing programme consumes less than 7 liters of water per kg and cycle
- ✓ **High G-FACTOR 450 for High spin machines**
Reduced residual moisture > reduced drying time
- ✓ **Water RE-CYCLE** (recirculation of bath water)



ERGONOMICS

- ✓ **Biggest door diameters in the market**
Helpful, mainly for big capacity washers, for loading and unloading operations
- ✓ **Easy opening/closing system for door lock**
- ✓ **Plinths for 11, 14, 18, 27 and 36 kg models**
To align loading height (door base at 850 mm)



MAINTENANCE

- ✓ **Hinged panel** Easy and ergonomic access to control panel parts
- ✓ **Equivalent parts**
Most key parts are the same for all models parts are same for all models (contactors, electronic devices, gear...)
- ✓ **Easy access to parts for reparability**
- ✓ **Technical menu:** traceability, error diagnosis, machine monitoring, software update...





Programmable
microprocessor

TOUCH II

User friendly and
totally programmable
microprocessor with
7" touch screen
and 29 preset
programs

Configuration of washing and spinning speed
Complete regulation of water levels
Regulable washing temperature from 20°C to 90 °C
Standard WET CLEANING system

Videos on display

Ads, instructions
(useful for coin laundries)



The new TOUCH II is a substantial evolution from the previous microprocessor which includes many more features mainly based on achieving more efficiency, versatility and connectivity among others.

8 dosing signals as standard + optional 6 extra dosing signals



37 languages

Available and easy to configure, thanks to DOMUS aim to be accessible to everyone.



USB Connection

PC software (Wash Control) free of charge for programming, traceability, data analysis...



G-FACTOR

DOMUS washer extractors, whether high, medium or normal spin, are the ones with the highest G-Factor in the market, which ensures minimum residual moisture, and this translates into less energy costs during the drying cycle.

**High G-Factor
reduces residual
moisture and
drying time**





EFFICIENCY

DOMUS washer extractors offer a wide variety of efficient features to make sure that the washing cycles use only the needed water and chemicals, not more.

Intelligent Weighing System

Possibility of configuring three levels of savings

Low water consumption

Standard washing program consumes less than 7 liters of water per kg and cycle

Optimal loading

High G FACTOR 450 for high spin machines

Reduced residual moisture > reduced drying time

Water re-cycle

Optional kit to increase the care of the linen: recirculation of the bath water, which increases the water flow with chemicals, shortens the cycle and improves the effectiveness without mechanical action



ECOTANK

Ready to be connected to water recovery tanks

Domus washer extractors, with Touch II microprocessor and double drain, can be connected to the new Domus Ecotank which allows the water recovery, achieving important water and energy savings.





VERSATILITY

To adapt to the needs of the different businesses and sectors with the smallest investment.

Make to order:

customisation

New possibility to customise the machines from factory with the available options

Electric < > Hot water

Standard electric models easily transformable to hot water models

Drain valve < > Pump

Standard models easily transformable
Easy access and service

Wet Cleaning[®]

Thanks to DOMUS constant development, our models are equipped with the features to use WET CLEANING programs:

- ✓ Fully programmable T2 Control
- ✓ Total control of temperature and water levels
- ✓ Programmable washing speed: very low (13 R.P.M.)
- ✓ Rhythm on/off 3seg/40seg
- ✓ Total control of dosing signal



DOMUS washer extractors between 10 and 36 kg are specially designed to be used in coin laundry businesses. This is available both for soft mounted machines DHS and hard mounted machines DMS and DLS.

OPL < > COIN

A new feature of Domus washers is its easy transformation from an OPL to a COIN machine.

Three available options:

1



Coin / Token

There are several kits depending on the currency of each country, which can be used with a token or with a new mechanical coiner kit. Both to be ordered with a coin box kit.



2



Central Pay

The machines can be connected to the central pay with the central pay kit to control a single box with money.



3



Remote payment

Machines ready for remote communication: allows programming, management and technical feedback. Multi payable systems: price updating, etc.

Open system

Domus equipment is prepared to work with any external payment system (by means of multi-point data).



CONNECTIVITY

One thing that is a must nowadays is to stay **CONNECTED**.

DomusConnect is the new IoT solution: a cloud based platform which allows many possibilities.

Remote technical service

Machine monitoring, machine error warning, management for traceability and statistics.

Remote desk and data recovery for technicians and maintenance, software update, etc.

Bidirectional communication with the machine to offer a quicker and closer service, to update software or to solve technical issues.





DOMUSCONNECT

Management of laundries: OPL and COIN

Our DOMUS IoT solution allows you to manage your laundry business (i.e. create discount programs for customers, get statistics, traceability and laundry monitoring).



Remote payment

App for payments, cashless payment by scanning a QR code, promotions and machine booking.



ERGONOMICS

As health and safety at work had become an important issue, our equipment is designed to be the most comfortable for the user.

Biggest door diameters in the market

Helpful, mainly for big capacity washers, for loading and unloading the garments

Easy opening/closing system for door lock

Plinths for 11, 14, 18, 27 and 36 kg models

To align loading height (door base at 850 mm)

Reversible door





MAINTENANCE

One of DOMUS concerns is to make life easier for our clients. That includes offering quality equipment and parts of reputed brands, which demand little maintenance.

Easy access for reparability

Washers are designed to offer an easy maintenance and reparability

Equivalent parts

Most key parts are the same for all models (contactors, electronic devices, gear,...)

Hinged panel

Easy and ergonomic acces to the panel

Technical menu


Machine monitoring, machine error warning, management for traceability and statistics. Remote desk and data recovery for technicians and maintenance, software update, etc.



Washer extractors technical data

 HIGH SPIN									
	UNIT.	DHS-11	DHS-14	DHS-18	DHS-27	DHS-36	DHS-45	DHS-60	DHS-120
DRUM									
Load capacity (kg) 1:9 / 1:10	Kg	11/10	14/13	20/18	28/25	39/35	50/45	67/60	133/120
Volume	l	100	130	180	250	350	450	600	1200
Diameter	mm	532	620	700	770	860	918	1048	1360
Depth	mm	425	430	470	530	602	720	684	840
GENERAL DETAILS									
Washing speed / Spining speed	r.p.m.	50/1.231	50/1.138	47/1.071	45/1.024	42,5/966	42,5/934	38/875	34/678
G Factor	-	450	450	450	450	450	450	450	350
Noise level	dB	< 70	< 70	< 70	< 70	< 70	< 70	< 70	< 70
Coin laundry version	-	YES	YES	YES	YES	YES	NO	NO	NO
Double drainage	-	NO	OPT.	OPT.	OPT.	OPT.	OPT.	OPT.	OPT.
Weighing System	-	OPT.	OPT.	OPT.	OPT.	OPT.	OPT.	OPT.	OPT.
Tilting System	-	NO	NO	NO	NO	NO	OPT.	OPT.	OPT.
SLUICE option	-	NO	NO	NO	NO	NO	NO	NO	NO
DOOR									
Height center door / Height base door	mm	630/370	700 / 440	765 / 450	865 / 560	885 / 540	1.190 / 830	1.190 / 830	1.330 / 900
Diameter	mm	373	373	460	460	560	560	560	700
POWER									
Motor	kW	0,75	1,1	2,2	4	4	7,5	11	15
Electric heating power	kW	6	9	12	18	21	28,8	36	-
Total electric power (electric model)	kW	6,25	9,4	12,75	19,2	22	31,3	40	-
Total electric power (steam model)	kW	0,75	1,1	2,2	4	4	7,5	11	15
CONNECTIONS									
Steam intake (steam mod.)	inch	1/2"	1/2"	1/2"	3/4"	3/4"	3/4"	3/4"	1-1/4"
Water intake	inch	3/4"	3/4"	3/4"	3/4"	3/4"	1"	1"	1-1/2"
Drain	inch	3"	3"	3"	3"	3"	3"	3"	4"
DIMENSIONS									
Width	mm	692	788	884	979	1.095	1.478	1.478	1.836
Depth	mm	788	869	913	1.041	1.184	1.444	1.444	1.863
Height	mm	1.185	1.307	1.415	1.553	1.598	1.945	1.945	2.245
Net weight	kg	230	250	360	490	750	1.350	1.400	3.950
PACKING DIMENSIONS									
Width	mm	730	830	930	1.040	1.165	1.540	1.540	1.900
Depth	mm	1.000	1.010	1.030	1.160	1.230	1.580	1.580	1.940
Height	mm	1.417	1.560	1.700	1.850	1.920	1.970	1.970	2.290
Gross weight	kg	239	283	393	545	820	1.420	1.520	4.100
Volume	m ³	1,03	1,31	1,63	2,23	2,75	4,79	4,79	8,44

*DOMUS reserves the right to modify the technical data without notice.

<div> MEDIUM SPIN</div>						
	UNIT.	DMS-11	DMS-14	DMS-18	DMS-27	
DRUM						
Load capacity (kg) 1:9 / 1:10	Kg	11/10	14/13	20/18	28/25	
Volume	l	100	130	180	250	
Diameter	mm	620	620	700	770	
Depth	mm	330	430	470	530	
GENERAL DETAILS						
Washing speed / Spining speed	r.p.m.	50/929	50/929	45/874	40/836	
G Factor	-	300	300	300	300	
Noise level	dB	< 70	< 70	< 70	< 70	
Coin laundry version	-	YES	YES	YES	YES	
Double drain	-	EXT.-OPT	EXT.-OPT	OPT.	OPT.	
Weighing System	-	NO	NO	NO	NO	
Tilting System	-	NO	NO	NO	NO	
SLUICE option	-	NO	NO	NO	NO	
DOOR						
Height center door / Height base door	mm	570/310	570/310	655 / 348	700 / 400	
Diameter	mm	373	373	460	460	
POWER						
Motor	kW	1,1	1,1	2,2	3	
Heating (Electric model)	kW	6	9	12	18	
Max. power (Electric model)	kW	6,25	9,5	12,75	19	
Max. power (Steam and HW model)	kW	1,1	1,1	2,2	3	
CONNECTIONS						
Steam intake (steam mod.)	inch	1/2"	1/2"	1/2"	3/4"	
Water intake	inch	3/4"	3/4"	3/4"	3/4"	
Drain	inch	3"	3"	3"	3"	
DIMENSIONS						
Width	mm	719	719	788	884	
Depth	mm	684	830	840	1.011	
Height	mm	1.158	1.158	1.307	1.340	
Net weight	kg	217	239	281	340	
PACKING DIMENSIONS						
Width	mm	800	800	840	930	
Depth	mm	990	990	1.010	1.150	
Height	mm	1.350	1.350	1.500	1.523	
Gross weight	kg	225	247	301	370	
Volume	m³	1,07	1,07	1,3	1,6	

LOW SPIN					
DLS-11	DLS-14	DLS-18	DLS-27	DLS-36	DLS-60
11/10	14/13	20/18	28/25	39/35	67/60
100	130	180	250	350	600
620	620	700	770	860	1048
330	430	470	530	602	684
53/759	53/759	50/714	48/682	45/644	42,5/505
200	200	200	200	200	150
< 70	< 70	< 70	< 70	< 70	< 70
YES	YES	YES	YES	YES	NO
NO	OPT.	OPT.	OPT.	OPT.	OPT.
NO	NO	NO	NO	NO	NO
NO	NO	NO	NO	NO	NO
YES	YES	YES	YES	YES	NO
570/310	570/310	655 / 348	700 / 400	735 / 440	900 / 540
373	373	460	460	560	560
1,1	1,1	2,2	3	4	5,5
6	9	12	18	21	28,8
6,25	9,5	12,75	19	22	31,3
1,1	1,1	2,2	3	4	5,5
1/2"	1/2"	1/2"	3/4"	3/4"	3/4"
3/4"	3/4"	3/4"	3/4"	3/4"	3/4"
3"	3"	3"	3"	3"	3"
719	719	788	884	979	1225
684	830	840	1.011	1.066	1.279
1.158	1.158	1.307	1.340	1.411	1.640
217	239	281	340	473	930
800	800	840	930	1.050	1.360
990	990	1.010	1.150	1.250	1.480
1.350	1.350	1.500	1.523	1.600	1.880
225	247	301	370	503	1.050
1,07	1,07	1,3	1,6	2,1	3,73



C. Energia, 12 - Pol. Ind. La Quintana
08504 Sant Julià de Vilatorrada
BARCELONA (SPAIN)

SALES DEPARTMENT

T. +34 93 812 27 96
M. +34 649 482 730
F. +34 93 888 76 63
domus@domuslaundry.com
export@domuslaundry.com

AFTER SALES DEPARTMENT

T. +34 93 888 76 73
F. +34 93 888 76 63
sat@domuslaundry.com

PARTS DEPARTMENT

T. +34 93 888 76 83
F. +34 93 888 76 63
parts@domuslaundry.com



WWW.DOMUSLAUNDRY.COM



ONNERA GROUP